

MRV08

VIRTUE SERIES

8 CHANNEL H.264 MOBILE EMBEDDED
DIGITAL VIDEO RECORDER

KEY FEATURES

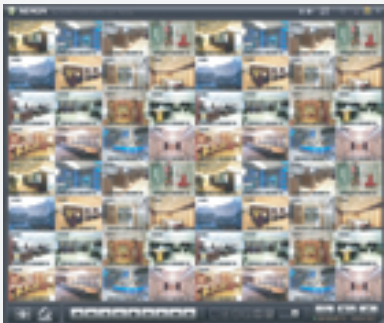
- Embedded Linux Operating System
- H.264 video compression
- Compact Size For In-Vehicle Installation
- Multi Storage Support – 2.5" Removable HDD, SD and SSD
- Built in GPS For E-Map Application
- Industrial Standard To Stand harsh Temperatures Without Additional Enclosures
- External I/O Box For Multi Sensors/Alarms with Drivers control panel(box)
- Built In Power Supply For Cameras(12V)
- Removable Storage for Easy Data and System Management, and dual protection.
- Various Event Detections Using Built-In G-Sensor



FEATURES IMAGES

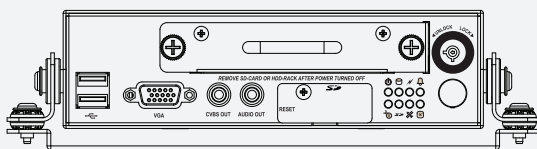
CMS (CENTRAL MONITORING SYSTEM)

Provide 128ch multi monitoring / search programme allows most effective remote controlling system

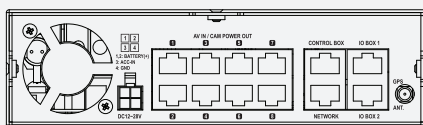


TECHNICAL SPECIFICATIONS

CODEC	H.264
OPERATING SYSTEM	EMBEDDED LINUX
VIDEO	
Channel	8
Output	CVBS, VGA
Dual Display	No
Covert	Yes
RECORDING	
Rate (PAL)	200fps@CIF/100fps@Half D1/50fps@D1
Mode	Time-lapse, Event, Emergency
PLAYBACK	
Display	Realtime
Search Mode	Calendar Search, Event Search, Text-In Search, Go to Time
STORAGE	
Internal	1 ea HDD 2.5" (Max 1TB)
Backup	USB
NETWORKING	
Web	IE7 and higher
CMS	Support max 128ch viewing (dual monitor)
Mobile	iPhone, iPad, Android
Email	Yes
Snapshot Function	IE - No CMS - Yes Apps - Yes
INTERFACE	
Network	1 RJ-45, 10/100M Ethernet Interface
IR Extension	No
USB	2
PTZ(RS-485)	No
POS (RS-232)	No
Audio	8in, 1out
Alarm	4in, 2out
POWER SUPPLY	12VDC - 30VDC, 5.33A
POWER CONSUMPTION (w/o HDD)	64W
OPERATING TEMPERATURE	-20°C ~ 50°C
HUMIDITY	0% ~ 80%RH
DIMENSION (W x L x H)	225.5mm x 242mm x 59mm
WEIGHT(w/o HDD)	2.1kg
HOUSING	mini 1U



Front



Back